

# The first evidence of trace fossils and pseudo-fossils in the continental interlava volcanoclastic sediments on the Faroe Islands

RICHARD POKORNÝ, LUKÁŠ KRMÍČEK & UNI E. ÁRTING



Pokorný, R., Krmíček, L. & Árting, U.E. 2015. The first evidence of trace fossils and pseudo-fossils in the continental interlava volcanoclastic sediments on the Faroe Islands. © 2015 by Bulletin of the Geological Society of Denmark, Vol 63, pp. 45–57. ISSN 2245-7070. ([www.2dgf.dk/publikationer/bulletin](http://www.2dgf.dk/publikationer/bulletin)). <https://doi.org/10.37570/bgSD-2015-63-05>

Interlava volcanoclastic sediments, mostly sandstones, from the Palaeogene Faroe Islands Basalt Group (Malinstindur and Sneis Formations) contain rare ichnofauna and well-preserved pseudo-fossils in the form of linear structures. Five specimens of two ichnogenera have been identified, which include *Helminthoidichnites* isp. and *?Palaeophycus* isp. The linear structures are interpreted to be desiccation cracks. This association indicates an environment with low to moderate hydrodynamic energy, which confirms a mosaic landscape of floodplains with rivers and shallow lakes.

**Keywords:** Faroe Islands, trace fossils, pseudo-fossils, volcanoclastic sediments.

Received 20 May 2015  
Accepted in revised form  
13 October 2015  
Published online  
11 November 2015

Richard Pokorný [[richard.pokorny@ujep.cz](mailto:richard.pokorny@ujep.cz)], Jan Evangelista Purkyně University, Faculty of Environment, Králova Výchina 3132/7, 40096 Ústí nad Labem, Czech Republic. Lukáš Krmíček [[l.krmicek@gmail.com](mailto:l.krmicek@gmail.com)], Brno University of Technology, Faculty of Civil Engineering, AdMaS Centre, Veveří 95, CZ-602 00 Brno, Czech Republic (also Institute of Geology, v.v.i., Czech Academy of Sciences, Rozvojová 269, CZ-165 02 Prague 6, Czech Republic). Uni E. Árting [[Uni.Arting@jardfeingi.fo](mailto:Uni.Arting@jardfeingi.fo)], Jarðfeingi, Brekkutún 1, Postsmoga 3059, FO 110 Tórshavn, Faroe Islands (also University of the Faroe Islands, J.C. Svabos gøta 14, FO 110 Tórshavn, Faroe Islands).

The Faroe Islands are a 1400 km<sup>2</sup> remnant archipelago of the extensive Palaeogene subaerial volcanic succession that covers large parts of the eastern margin of the North Atlantic. Beds of volcanoclastic rocks, generally sandstones and conglomerates, are often intercalated with the lava flows in the succession, and Palaeogene fossil material on the Faroe Islands occurs almost exclusively in these volcanoclastic beds. The fossil material is not rich, and trace fossils have not been recorded before. This study describes and interprets some structures, believed to be trace fossils and pseudo-fossils, that were recently discovered at two localities, Eiði and Hundsarabotnur, during a survey of intra-volcanic sedimentary rocks at 32 localities across the Faroe Islands (Fig. 1).

## Geological setting

The term Faroe Islands Basalt Group (FIBG) covers the basaltic lava succession onshore as well as the offshore continuation on the Faroe Platform, the

Faroe–Shetland Channel, and the banks south of the Faroe Platform (Jolley & Bell 2002). The onshore parts of the FIBG are presumed to rest on a continental crust consisting of Precambrian metamorphic rocks (Casten 1973; Bott *et al.* 1974; Gariépy *et al.* 1983; Holm *et al.* 2001). Passey & Jolley (2009) described the FIBG as comprising both the onshore parts and the offshore continuation of the lava succession to the east and southeast into the Faroe–Shetland Basin, covering an estimated area of c. 120 000 km<sup>2</sup>. Their work was based on the study of both borehole material and subaerial exposures. Passey & Jolley (2009) also re-defined and renamed the formations originally described by Rasmussen & Noe-Nygaard (1969). Seven lithostratigraphic formations are now formalized with a total thickness of 6.6 km. The formations, in stratigraphic order, are as follows: Lopra Formation, Beinisvørð Formation, Prestfjall Formation, Hvannahagi Formation, Malinstindur Formation, Sneis Formation and Enni Formation (Figs 1, 2). Noe-Nygaard & Rasmussen (1968) distinguished three major petrological types of subaerial lava flows, and subordinate interlava units within the Faroe Islands. The lava flow types are aphy-

ric basalts that lack phenocrysts and typically have a fine-grained groundmass; plagioclase-phyric basalts that also typically have a fine-grained groundmass in which the phenocrysts sometimes form stellate clusters; and olivine-phyric basalts with small, typically stout, olivine phenocrysts. Radiometric data from Waagstein *et al.* (2002) and Storey *et al.* (2007) provide an age range of 60.5 Ma to 55.2 Ma. These data are however in disagreement with the biostratigraphic ages from the FIBG (Jolley 2009). For further discussion, see Passey & Jolley (2009).

Beds of volcanoclastic rocks, generally sandstones and conglomerates, are often intercalated with the lava flows of the FIBG. Mudstone and coal also occur here, but in smaller amounts (Ellis *et al.* 2002; Passey 2004; Passey & Jolley 2009). Frequent intervals of fine-grained clayey sandstone are recorded in the lower and upper part of the Lopra Formation in the Lopra-1 borehole on Suðuroy, where up to several tens of me-

tres in thickness of such rocks were recorded (Ellis *et al.* 2002; Boldreel 2006). Thin beds up to 2 m thick of laminated sandstone or conglomerate are present mostly in the lower and middle part of the Beinivørð Formation (Hald & Waagstein 1984). In the upper 200 m of this formation, there are abundant layers of mudstone that are sporadically accompanied by coal seams and sandstone (Rasmussen & Noe-Nygaard 1970; Passey 2004; Passey & Bell 2007; Passey 2008).

The Prestfjall Formation is a 3–15 m thick sedimentary succession comprising coal-bearing layers along with clay, shale, and occasionally sandstone and conglomerate. Palaeo-depressions created after the deposition of the Prestfjall Formation were consequently filled by sediments from the Hvannahagi Formation. This mostly volcanoclastic facies also comprises poorly sorted mudstone, conglomerate and sandstone, with rare coal clasts (Rasmussen & Noe-Nygaard 1970; Passey 2004; Passey & Jolley 2009).

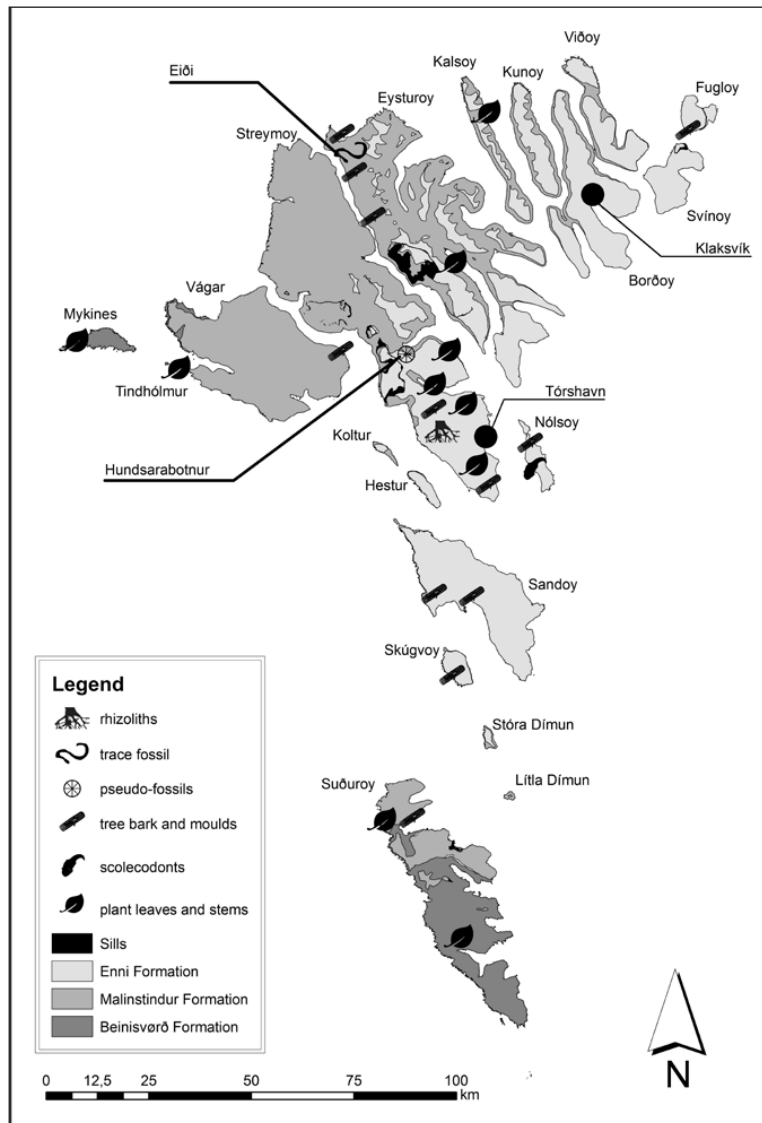


Fig. 1. Simplified geology and evidence of Palaeogene macrofossil localities on the Faroe Islands. Modified and supplemented after Hartz 1903, Noe-Nygaard 1940, Rasmussen & Koch 1963, Rasmussen & Noe-Nygaard 1990, Ellis *et al.* 2002, Passey 2004, Passey 2008 and Passey & Jolley 2009.

The Malinstindur Formation overlies the upper erosional base of the locally occurring Prestfjall and Hvannhagi Formations. Volcaniclastic sandstones and mudstones, generally several metres thick, are present throughout the lava succession, but they are most abundant in the upper part of the Malinstindur Formation (Passey 2004; Passey & Jolley 2009). Passey & Jolley (2009) defined a significant, up to 7 m thick horizon named the Kvívík Beds. The Kvívík Beds are located approximately 780 m above the base of the Malinstindur Formation. They consist of a red basal sandstone and, in the upper part, coarse-grained conglomerate and grey-coloured mudstone (Passey & Jolley 2009; Passey & Varming (2010).

The Sneis Formation comprises a laterally extensive, up to 30 m thick sandstone and conglomerate

sequence. A distinct sediment horizon, the Sund Bed, can be found at the base of the Sneis Formation and marks a major hiatus in the volcanic activity. It is up to 1 m thick and composed of coarse-grained volcaniclastic sandstone and clasts of zeolitised wood. This layer is overlain by greenish-grey conglomerate (Passey 2009; Passey & Jolley 2009).

The youngest lithostratigraphic unit of the Faroe Islands is the Enni Formation. It often contains sediment horizons similar to the Malinstindur Formation. The best-developed horizon, the Argir Beds, is situated approximately 250 m above the base of the Enni Formation. The Argir Beds are 1–13 m thick and consist of thinly laminated fine-grained claystone and mudstone in the lower portion, which passes upwards into coarse-grained conglomerate (Passey 2009; Passey & Jolley 2009; Passey & Varming 2010).

A distinct sediment horizon of volcaniclastic sandstone, approximately 15 m thick, occurs on Nólsoy. Passey (2008) referred to it by the working term the Høsmøl Beds. Its stratigraphical position is 200–250 m above the base of Argir Beds, and the Høsmøl Beds are potentially the youngest significant sedimentary unit of the Faroe Islands (Fig. 2).

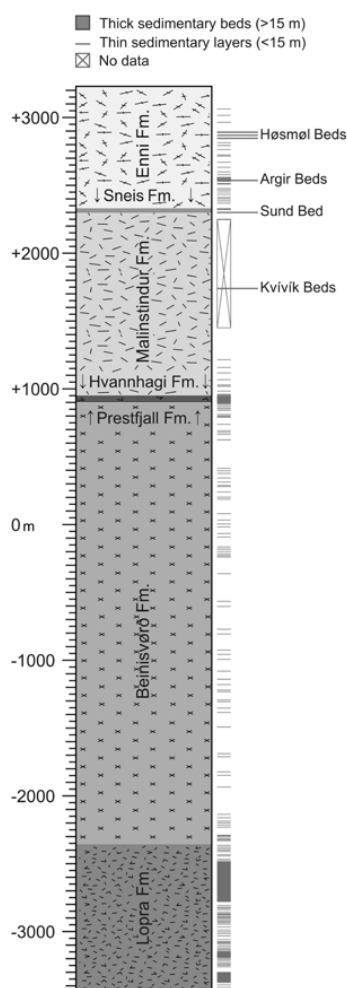


Fig. 2. Schematic stratigraphical log of the Faroe Islands with volcaniclastic sediment layers indicated to the right. The vertical scale is the stratigraphic height in metres; the part of the succession below the 0 m level is only known from drilling. After Rasmussen & Noe-Nygaard 1969, Hald & Waagstein 1984, Waagstein & Hald 1984, Waagstein 2006, Passey & Jolley 2009 and personal communication from S. Passey.

## Review of the palaeontological record and palaeoecology

The preservation of fossil organisms on the Faroe Islands is almost wholly associated with the volcaniclastic rocks. These can form as part of the volcanism (e.g., tuffs), but they mostly represent quiescent periods during which there was sufficient time for sedimentation to take place between the lava flows (Passey 2004; Passey & Jolley 2009). The interval between single volcanic eruptions is commonly characterised by reddened tops of subaerial lava flows, where subaerial weathering of volcanic soil occurred to form the soil profile and sedimentary layer in the humid subtropical climate (Parra *et al.* 1987; Passey 2004).

The variability of the Paleocene to Eocene palaeoecosystems of the FIBG was studied in detail by Laufeld (1965), Lund (1981, 1983, 1989), Ellis *et al.* (2002), Jolley (2009) and Passey & Jolley (2009). They identified a number of fungal spores, water algae, acritarchs, dinoflagellates, bryophyte spores and flowering plant pollen grains, which predicate sedimentation in a wide range of palaeoenvironments from estuarine and shallow marine, littoral to rivers and lakes to wetlands and swamps with coal development.

Macrofossils are represented by coalified and zeolitised plant fragments that usually cannot be specified taxonomically because of missing or badly

preserved morphological features (Passey 2004, 2008; Passey & Jolley 2009).

The amount of identified fossils is relatively small (Fig. 1). Fragments of *Metasequoia occidentalis* Chaney 1951 found in the shale, claystone and coal beds of the Beinivørð Formation on Mykines were described by Hartz (1903), Rasmussen (1925), Noe-Nygaard (1940) and Rasmussen & Koch (1963). Passey & Jolley (2009) described the poorly preserved broadleaved angiosperm *Corylites hebridicus* Seward & Holttum 1924 and the pteridophyte *Equisetites* sp. at the same locality. These same horsetails were also mentioned by Passey (2008) and Passey & Jolley (2009) from the volcanoclastic sandstones of the Malinstindur Formation at several localities on Streymoy, Borðoy and Kalsoy. A well-preserved sample of *Metasequoia occidentalis* foliage was also found in the volcanoclastic sandstone of the Enni Formation on the southern part of Streymoy (Rasmussen & Noe-Nygaard 1990).

Tree moulds, often with preserved shape of the inner imprint of the bark, represent a specific type of the palaeoflora preserved on the Faroe Islands. These are usually cylindrical cavities within a lava flow with diameters of approximately several centimetres to decimetres and lengths of several tens of decimetres. They occur, for example, in lava flows of the Malinstindur Formation on Vágur and Eysturoy, as well as in the Enni Formation on Nólsoy, Fugloy and Streymoy (e.g. Passey 2004; Passey & Bell 2007; Passey 2008). Ellis *et al.* (2002) supposed that the cavities from the Sundshálsur locality on Streymoy, which are situated closely above the layers of volcanoclastic sandstone, could represent moulds of thin trunks or branches.

Ellis *et al.* (2002) described a range of ferrous rhizomorphs, namely rhizoliths and rhizoconcretions, in fine-grained volcanoclastic sediments on the southern part of Streymoy. These are residues of plant root systems that colonised the terrestrial and wetland biotopes during the periods without volcanic activity. Beds of sandstone and siltstone with rhizoliths typically have a mottled appearance.

Animal fossils are extremely rare on the Faroe Islands. Probably the only remnants of fossil animal life in the Palaeogene volcanoclastic sediments are undetermined scolecodonts from the central part of the Enni Formation on Nólsoy (Ellis *et al.* 2002).

Fossils from the period after the end of the Palaeogene volcanic activity on the Faroe Islands are very rare. The unusual find of an 8–10 Ma old rostrum from the beaked whale *Choneziphius planirostris* Cuvier 1824, found at the bottom of the sea shelf north-west of Mykines, has been only roughly described (Post & Jensen 2013).

From the Quaternary period, a well-known and published vegetation succession with a rich palaeobo-

tanic record in lacustrine sediments and peats dates from the late Quaternary after the retreat of glaciers (e.g. Persson 1968; Jóhansen 1975, 1985, 1989; Edwards & Craigie 1998; Andresen *et al.* 2006; Jessen *et al.* 2008; Hannon *et al.* 2010; Olsen *et al.* 2010).

Rasmussen (1972) described frustules of diatoms and wood fragments, probably *Picea* sp. and/or *Larix* sp., in sandy clays of glaciomarine origin from the southern part of Borðoy. Greve (2001), Wastegård *et al.* (2005) and Abbott *et al.* (2014), following the presence of palynological material and tephrochronological analysis, dated them to the end of the Eemian Interglacial, c. 120 ka BP. Jóhansen (1989) mentions fragments of *Pinus* sp. from the same locality.

Holocene sand and organic conglomerate from a shallow lake on Suðuroy are interpreted as deposited by a tsunami caused by a large submarine slide, the Storegga slide, dated to 7320–6400 <sup>14</sup>C yr BP. These sediments contain small marine shell fragments, foraminifera and marine diatoms (Grauert *et al.* 2001).

A complex of Holocene organic sediment was found in borehole material from the fjord bottom collected in the southern part of Eysturoy. It contained palynomorphs, residues of insects, crustaceans and bryozoans of freshwater origin (Bennike *et al.* 1998), and was covered by clayey silt with marine shells and shell fragments, foraminifera, dinoflagellate cysts, diatoms and acritarch assemblages (Juul 1992; Roncaglia 2004; Witak *et al.* 2005). Holocene insect fauna studies from several localities of the Faroe Islands were produced by Buckland & Dinnin (1998), Buckland *et al.* (1998a, b), Edwards *et al.* (1998) and Gathorne-Hardy *et al.* (2007).

## Trace fossils

Probably no trace fossils have been recorded on the Faroe Islands, except for the previously mentioned rhizomorphs from the Enni Formation on Streymoy (Ellis *et al.* 2002). Problematic are thin tubes in ironstones and claystones and the circular micro-cavities in siderite spherules from the Prestfjall Formation on Suðuroy described by Passey (2004, 2014). He considered them as the evidence of bioturbation, i.e. burrows and borings. This assertion, however, requires detailed ichnological analysis and the relationship to trace fossils remains unclear.

In the broad area around the archipelago, fossil expressions of the life processes of organisms were found only in young submarine sediments. Fu & Werner (1994) published a short list of biogenic structures (e.g. *Chondrites*-like, *Planolites*, *Scolicia*, *Teichichnus*-like etc.), probably of Holocene age, coming from the sands and silts on the Iceland–Faroe Ridge slopes approximately 150–300 km west and north of the Faroe Islands. The presence of postglacial bioturbation struc-



tures in contourites on the Faroe–Shetland Channel slopes, approximately 250 km southeast of the Faroe Islands, is mentioned by Masson *et al.* (2010). Signs of bioturbation from Holocene marine sediments on the fjord bottom close to Eysturoy of a similar origin are mentioned by Bennike *et al.* (1998) without any details.

Predation traces in foraminifera tests (*Dipatulichnus rotundus* Nielsen & Nielsen 2001) from Holocene sediments on the sea floor, approximately 200 km southwest of the Faroe Islands, were mentioned by Nielsen & Nielsen (2001).

## Locality descriptions

### Eiði

This exposure is situated in the north-western part of Eysturoy, on the eastern edge of the Eiði village, in a roadside cutting near road No. 23 (62°17'56.8" N, 07°05'09.4" W).

A 0.75–1.00 m thick succession of volcanoclastic sediments is situated between two amygdaloidal basalt lava flows of the Malinstindur Formation. The sediments form part of the Kvívík Beds (Fig. 2), and their lithology and mineralogy was described in detail by Passey (2004) who defined two different lithological units that are separated from the lava flows by sharp and planar surfaces at the top as well as at the base.

Brownish-yellow to reddish-yellow, tuffaceous, laminated, moderately sorted sandstone, approximately 50 cm thick, overlies the underlying basalt. The sandstone alternates with coarser-grained layers of darker colour in the lower part of the profile. The darker layers are

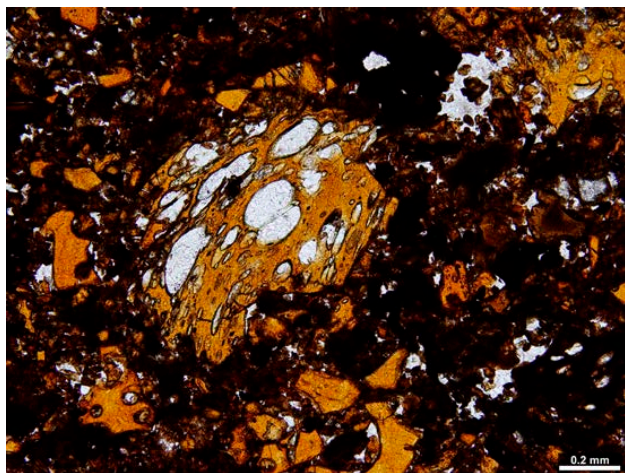


Fig. 3. Photomicrograph of fine-grained laminated sandstone of the Kvívík Beds (Malinstindur Formation) from the Eiði exposure, containing highly vesicular palagonitised basalt glass fragments. Width of picture 1.75 mm.

characterised by highly palagonitised basalt glass and sub-rounded basalt fragments. Lighter, fine-grained layers contain palagonitised glass as well as angular plagioclase crystals, but basaltic clasts are missing. Sandstone fills abundant vertical fissures in the underlying lava flow (Passey 2004).

The lower sediments pass upwards into a reddish-brown, laminated, poorly to moderate sorted, variably grained sandstone up to 50 cm thick, containing a large amount of angular to sub-rounded clasts of palagonitised basalt glass in different stages of alteration (Fig. 3). Some of them contain plagioclase phenocrysts (Passey 2004). Sporadic trace fossils were found in this horizon.

Ellis *et al.* (2002) mention the occurrence of a palynoflora with a dominance of *Inaperturopollenites hiatus* (*Metasequoia*) with *Retitricolpites* species (possibly a riparian plant), *Monocolpopollenites tranquilus* (*Ginkgo*) and bryophyte spores (*Stereisporites* spp.) around Eiði. We found here recently also macroscopic fragments of plant fossils.

### Hundsarabotnur

This exposure is in the active quarry of Hundsarabotnur, situated in the western part of Streymoy, on the eastern slope of the Skælingur mountain (767 m a.s.l.), near road No. 50.

Rocks exposed in the Hundsarabotnur quarry belong to the upper part of the Malinstindur Formation, the volcanoclastic sedimentary Sneis Formation, and the lower part of the Enni Formation. The lowest unit in the Sneis Formation is the Sund Bed, the base of which is visible in the quarry floor. The Sund Bed is overlain by conglomerates of the Sneis Formation, with a thickness of approximately 25 m. On the quarry

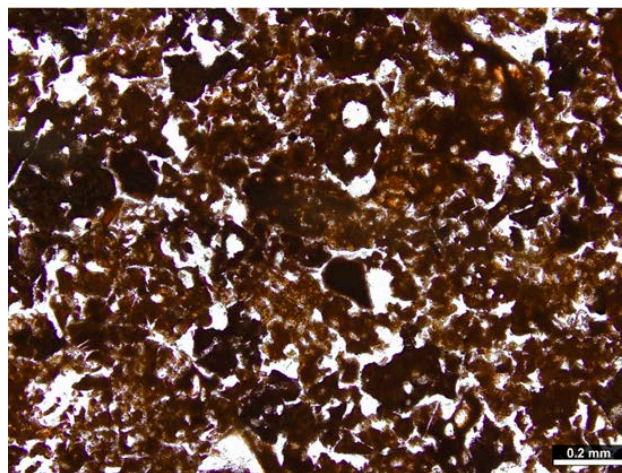


Fig. 4. Photomicrograph of fine-grained laminated sandstone of the Sund Bed from the Hundsarabotnur quarry (the base of the Sneis Formation), showing abundant palagonitised basalt glass. Width of picture 1.95 mm.



wall, the relatively simple stratigraphic arrangement is affected by the intrusion of two segments from the large Streymoy Sill. These apophyses juxtapose the Malinstindur Formation and the Enni Formation (Passey 2008; Ártung & Petersen 2012).

Exposure of the volcanoclastic sediments, belonging stratigraphically close to the basal Sund Bed

(62°05'36.85" N, 06°58'44.56" W), is seen in the local road cutting 750 m north-west of the technical buildings. The sediment horizon is 1 m thick and comprises two distinguishable units. Compact reddish-brown, medium-grained sandstone is situated in the lower part. This layer passes gradually upwards into lighter, ochre-reddish, finer-grained laminated sandstone

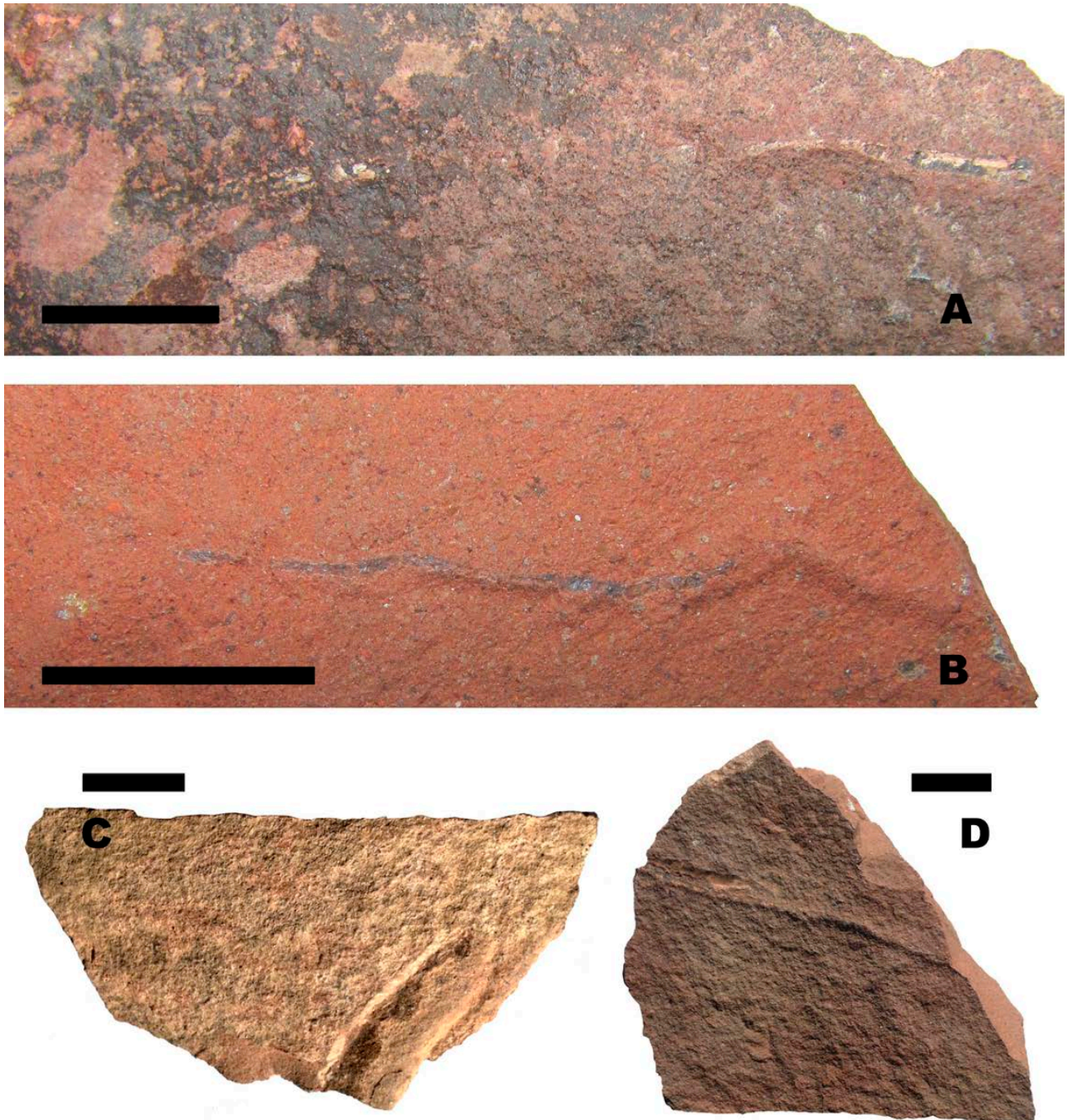


Fig. 5. Trace fossils from the Eiði exposure (Malinstindur Formation). **A**, *Helminthoidichnites* isp.; specimen Eiði2a/1. **B**, *Helminthoidichnites* isp.; specimen Eiði1b. **C**, *?Palaeophycus* isp.; specimen Eiði4a. **D**, *Helminthoidichnites* isp.; specimen Eiði3a. The scale bar is 2 mm long in all pictures.



predominantly consisting of sub-angular fragments of highly palagonitised basaltic glass and sericitised feldspar accompanied by clay minerals and abundant opaque minerals in the matrix (Fig. 4). The upper layer contains carbonated and zeolitised fragments of plant fossils, and sporadic geometrically straight lines are found on the bedding surfaces. The contacts to the compact lava flows below and above the sediment horizon are not exposed.

## Systematic ichnology

### *Helminthoidichnites* isp.

Figs. 5A, 5B, 5D, 6A

*Diagnosis:* Horizontal, small, thin, unbranched, simple, straight or curved, irregularly meandering or winding trails or burrows with occasional loops that commonly overlap among specimens, but lack self-overcrossing (Buatois *et al.* 1998; Schlirf *et al.* 2001).

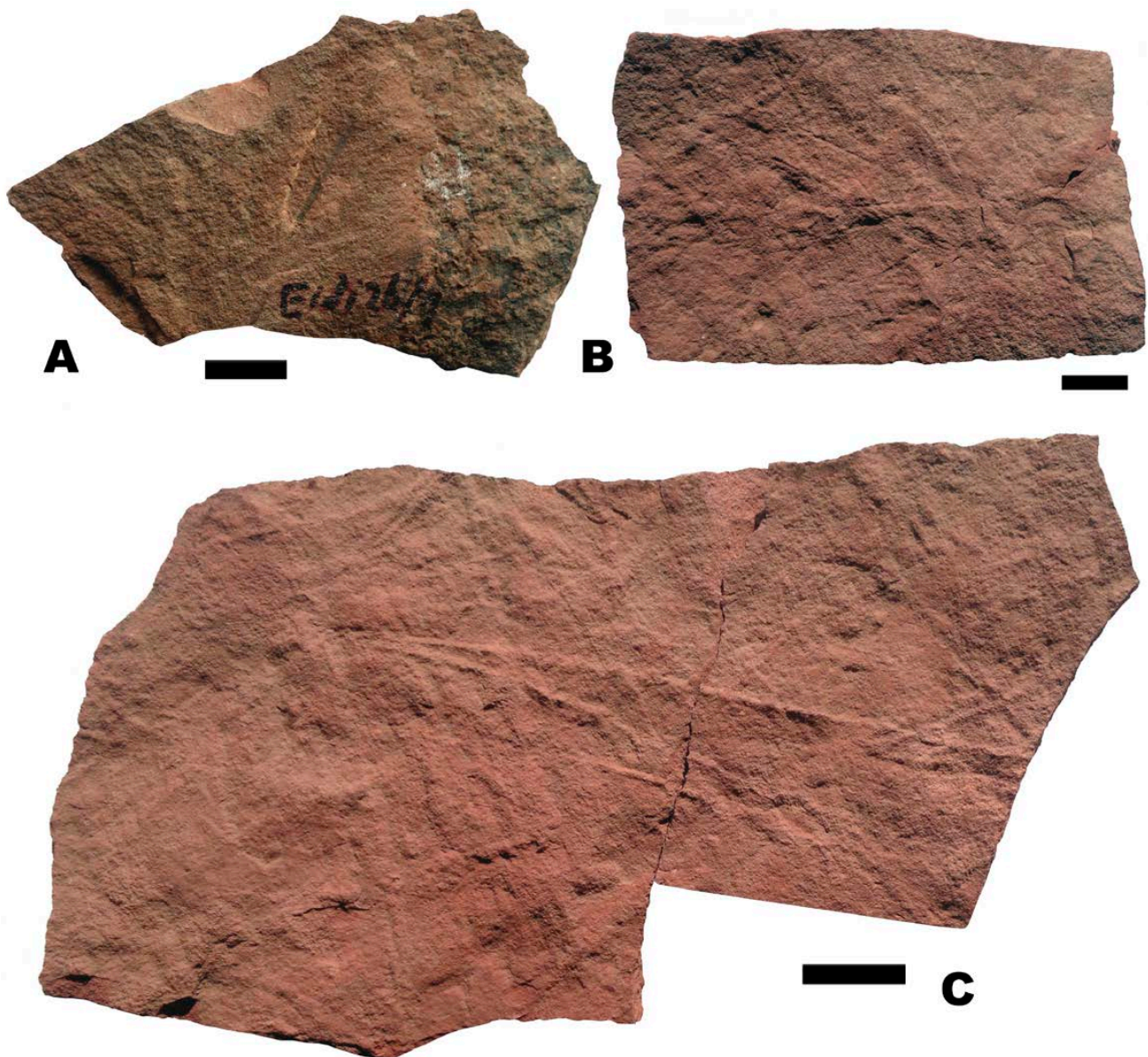


Fig. 6. **A**, trace fossil from the Eiði exposure (Malinstindur Formation), *Helminthoidichnites* isp.; specimen Eiði2b/1. **B–C**, linear structures from the Hundsarabotnur quarry (Sneis Formation). **B**, specimen Hund2a. **C**, specimen Hund1a/1+2. The scale bar is 2 mm long in all pictures.

*Material:* Four specimens – Eiði1a and Eiði1b (upper and lower bedding surface); Eiði2a/1+2 (upper bedding surface), Eiði2b/1 and Eiði2b/2 (fragments of lower bedding surface); Eiði3a and Eiði3b (upper and lower bedding surface).

*Description:* Thin, slightly winding to almost straight, horizontal, non-branching and non-meandering simple ridges or furrows, without self-overcrossings. The structures are preserved in a weakly convex to almost flat relief on the upper bedding surface and in a concave to flat relief on the lower bedding surface. The trace width ranges from 0.7 to 1.8 mm and is constant over the whole length. Maximal length reaches 150 mm.

*Remarks:* The traces are poorly preserved, without any detailed or diagnostic features. The structures resemble the segments of *Treptichnus pollardi* Buatois & Mángano 1993 identified by these authors in horizontal view (Buatois & Mángano 1993a), but the pits or nodes at the adjacent segment contacts are missing here. Moreover, the traces only have a two-dimensional character. The gently curved shape of the traces, without a tendency to meander, is different from that in *Helminthopsis* or *Cochlichnus*. The absence of self-overcrossing distinguishes them from *Gordia* (Buatois *et al.* 1997). A detailed overview of morphological differences can be found in the literature, e.g. Jensen (1997), Schlirf *et al.* (2001), Uchman *et al.* (2005) and Baucon & Neto de Carvalho (2008).

*Helminthoidichnites* probably represents a grazing trace (pascichnia), where the tracemakers are assumed to be unspecified Nematomorpha, Arthropoda, or insect larvae (Buatois *et al.* 1997, 1998). In addition to occurring in marine sediments, *Helminthoidichnites* is mentioned in many freshwater palaeoecosystems, including floodplains (Buatois *et al.* 1997; Schlirf *et al.* 2001; Buatois & Mángano 2002; Uchman *et al.* 2004; Melchor *et al.* 2006), estuaries, lacustrine deltas, shallow lacustrine facies (Buatois *et al.* 1998, 2000; Melchor 2004; Voigt 2005; Melchor *et al.* 2006), glaciolacustrine lakes (Buatois & Mángano 1993b; Gaigalas & Uchman 2004; Uchman *et al.* 2008, 2009), and turbidites of deep lakes (Buatois *et al.* 1996).

### ?*Palaeophycus* isp.

Fig. 5C

*Diagnosis:* Branched or, more typically, unbranched, straight to slightly curved to slightly undulate or flexuous, smooth or ornamented, typically lined, elliptical to circular in cross-section, predominantly horizontal structures interpreted as originally open burrows; infill typically structureless, massive, of same lithology

or similar to host rock. Where present, the bifurcation is not systematic, nor does it result in swelling at the site of branching (Pember-ton & Frey 1982; Fillion & Pickerill 1990; Kim *et al.* 2001).

*Material:* One specimen – Eiði4a (upper bedding surface).

*Description:* Short fragment of the horizontal, slightly curved, weakly convex, non-branching trace, 40 mm long and 15 mm wide. The trace is flat-oval in cross section, with a height of 3.5 mm. The surface is smooth, and a wall is faintly visible as a dark coloured thin coating. The burrow-fill is massive and similar to the host rock.

*Remarks:* A fragment of only one specimen prevents a more accurate determination. The presence of wall coating distinguishes this trace from *Planolites*. Due to the absence of surface sculpture, we suggest a relationship to *Palaeophycus*, probably *P. tubularis* Hall 1847.

*Palaeophycus* is interpreted as a dwelling or deposit feeding structure (domichnia or fodinichnia), produced infaunally and thereafter passively filled in. The tracemaker may be different types of vermiform animals, probably polychaetes or annellids (Pember-ton & Frey 1982; Keighley & Pickerill 1995). *Palaeophycus* is a representative of eurybathic traces in a wide range of marine and freshwater palaeoenvironments including floodplains (Buatois *et al.* 1997; Buatois & Mángano 2002; Kim *et al.* 2002; Krapovickas 2012), rivers (Wang *et al.* 2014) and lakes (Buatois *et al.* 2000; Melchor 2004; Melchor *et al.* 2006). Ekdale *et al.* (2007) and Krapovickas *et al.* (2010) described *Palaeophycus* from aeolian sediments.

### Linear structures

Fig. 6B, 6C

*Material:* Two specimens - Hund1a/1+2 (upper bedding surface); Hund2a and Hund2b (upper and lower bedding surface).

*Description:* Fragments of sandstone containing numerous simple, straight and thin convex lines, sub-circular to  $\Lambda$ -shaped in cross-section. The lines reach up to 100 mm in length and 1.5 mm in width. The lines intersect each other at many places. The infill of the structures is identical to the host rock.

*Remarks:* Geometrically straight lines usually indicate an abiotic origin. Wetzel *et al.* (in press) describe the trails of modern earthworms with a similar arrangement pattern, but these traces differ from the speci-



mens in the Hundsarabotnur quarry by the not entirely linear trails, and the presence of morphological features such as the imprints of setae, pseudospreiten, blind deviations part of traces and tunnel openings. By studying the thin sections, the lines were found to have the same mineral composition as the surrounding rock. This fact excludes an explanation as pseudomorphs after needle-like minerals formed during diagenesis or due to the low-grade contact metamorphism of sediments by the overlying lava flow. The straight shape of the lines partly resemble the frost cracks arising due to seasonal freezing of sediment, the formation of elongated ice crystals and subsequent infilling of the fissures by sediment after the melting of the ice. Very similar structures were published by Udden (1918) and Fortier *et al.* (2008). Ice crystal marks, however, can be excluded due to the warm character of the Palaeogene climate (Vandenbergh *et al.* 2012). Based on the palaeoenvironment characteristics, the probable process leading to the creation of the structures in the Hundsarabotnur quarry could be described as the gradual drying and shrinking of the sediments in a subaerial environment (e.g. Geoff Tanner 2003; Sadhukan *et al.* 2007). Although the main distinguishing sign of such desiccation structures – a polygonal arrangement – was not observed here, it can be attributed to the fragmentary preservation of the examined specimens. The linear structures are thus pseudo-fossils.

## Summary and conclusions

The fine- to medium-grained volcanoclastic sandstones of the Palaeogene Faroe Islands Basalt Group consist mainly of reworked palagonitised basaltic glass and are traditionally associated with fluvial channel environments and their surroundings (Rasmussen & Noe-Nygaard 1970). Based on the lack of brecciation of the overlying lava flows Passey (2004) concluded that the land surface was without deep lakes and was only occasionally affected by seasonal flooding events at the time of lava emplacement. The important evidence of exposure to air in the warm climate is the iron-oxide-rich, red-coloured sedimentary formations and flow tops. This is supported by the occurrence of generally angular to sub-rounded basaltic clasts, indicating short-time/short-distance transport (Passey 2004), as well as the fossil evidence of mostly terrestrial or river- to lake-littoral palynomorphs (e.g. Ellis *et al.* 2002; Passey & Jolley 2009).

The subaerial, occasionally inundated, non-marine moist or wet, soft to loose ground environment corresponds to the *Scoyenia* ichnofacies. This trace-fossil

assemblage however, is typically dominated by meniscate burrows, arthropod trackways and simple vertical burrows (cf. Frey *et al.* 1984; Buatois & Mángano 1995).

*Helminthoidichnites* isp. and *?Palaeophycus* isp. that were found at Eiði (Malinstindur Formation) indicate a low to moderate hydrodynamic energy environment, which represents suitable conditions for benthic trace-makers (Buatois *et al.* 1997). These ichnogenera are, however, usually present as the diagnostic elements of the *Mermia* ichnofacies, which differs from the previous by occurring in permanently subaqueous zones, represented by the shallow to deep zones of lacustrine systems. Both of the mentioned ichnogenera are occasionally found in the *Scoyenia* ichnofacies (Buatois & Mángano 1995; Buatois *et al.* 1997; Melchor *et al.* 2012).

Based on the above assertions, the new discoveries of trace fossils and possible desiccation cracks confirm that the environmental character of the Palaeogene interlava sedimentary periods of the Faroe Islands was a mosaic landscape of floodplains, interwoven with rivers and wide shore-lined shallow lakes, with the presence of an impoverished *Scoyenia* ichnofacies.

## Acknowledgements

The authors gratefully acknowledge Luis A. Buatois and Maria G. Mángano (University of Saskatchewan, Canada) for their constructive comments on the fossil material. Special thanks to Simon R. Passey and Alfred Uchman for their thoughtful and thorough reviews.

Financial support was provided by the J. E. Purkyně University Internal Grant Agency FŽP IG 1/2014: *Ichnological record in young Cenozoic sediments on Iceland*. L.K. was financially supported by project No. RVO67985831 of the Institute of Geology CAS, v.v.i., Prague and by a BUT project No. LO1408 “AdMaS UP - Advanced Materials, Structures and Technologies”, which is supported by the Ministry of Education, Youth and Sports of the Czech Republic under the “National Sustainability Programme I”.

## References

- Abbott, P.M., Austin, W.E.N., Davies, S.M., Pearce, N.J.G., Rasmussen, T.L., Wastegård, S. & Brendryen, J. 2014: Re-evaluation and extension of the Marine Isotope Stage 5 tephrostratigraphy of the Faroe Islands region: The cryptotephra record. *Palaeogeography, Palaeoclimatology, Palaeoecology* 409, 153–168.
- Andresen, C.S., Björck, S., Rundgren, M., Conley, D.J. & Jessen, C.A. 2006: Rapid Holocene climate changes in the North

- Atlantic: evidence from lake sediments from the Faroe Islands. *Boreas* 35, 23–34.
- Árting, U.E. & Petersen, U. 2012: Field Trip Guide. 4<sup>th</sup> Faroe Islands Exploration Conference. Hydrocarbon Exploration on the Faroese Continental Shelf. 31 pp. Jarðfeingi, Tórshavn.
- Baucon, A. & Neto de Carvalho, C. 2008: From the river to the sea: Pramollo, a new ichnolagerstätte from the Carnic Alps (Carboniferous, Italy–Austria). *Studi Trentini di Scienze Naturali, Acta Geologica* 83, 87–114.
- Bennike, O., Böcher, J., Konradi, P., Kuijpers, A. & Larsen, B. 1998: Macrofossil studies of lacustrine sediments from Skálafjørður, the Faroe Islands: preliminary results. *Fróðskaparrit* 46, 267–275.
- Boldreel, L.O. 2006: Wire-line log-based stratigraphy of flood basalts from the Lopra-1/1A well, Faroe Islands. In: Chalmers, J.A. & Waagstein, R. (eds): Scientific Results from the deepened Lopra-1 Borehole, Faroe Islands. Geological Survey of Denmark and Greenland Bulletin 9, 7–22.
- Bott, M.H.P., Sunderland, J., Smith, P.J., Casten, U. & Saxov, S. 1974: Evidence for continental crust beneath the Faeroe Islands. *Nature* 248, 202–204.
- Buatois, L.A. & Mángano, M.G. 1993a: The ichnotaxonomic status of *Plangtichnus* and *Treptichnus*. *Ichnos* 2, 217–224.
- Buatois, L.A. & Mángano, M.G. 1993b: Trace fossils from a Carboniferous turbiditic lake: Implications for the recognition of additional nonmarine ichnofacies. *Ichnos* 2, 237–258.
- Buatois, L.A. & Mángano, M.G. 1995: The paleoenvironmental and paleoecological significance of the lacustrine *Mermia* ichnofacies: An archetypical subaqueous nonmarine trace fossil assemblage. *Ichnos* 4, 151–161.
- Buatois, L.A. & Mángano, M.G. 2002: Trace fossils from Carboniferous floodplain deposits in western Argentina: implications for ichnofacies models of continental environments. *Palaeogeography, Palaeoclimatology, Palaeoecology* 183 (1–2), 71–86.
- Buatois, L.A., Mángano, M.G., Wu, W. & Zhang, G. 1996: Trace fossils from Jurassic lacustrine turbidites of the Anyao formation (Central China) and their environmental and evolutionary significance. *Ichnos* 4, 287–303.
- Buatois, L.A., Jalfin, G. & Aceñolaza, G.F. 1997: Permian non-marine invertebrate trace fossils from Southern Patagonia, Argentina: ichnologic signatures of substrate consolidation and colonization sequences. *Journal of Paleontology* 71 (2), 324–336.
- Buatois, L.A., Mángano, M.G., Maples, C.G. & Lanier, W.P. 1998: Ichnology of an Upper Carboniferous fluvio estuarine paleo-valley: The Tonganoxie Sandstone, Buildex Quarry, eastern Kansas. *Journal of Paleontology* 72 (1), 152–180.
- Buatois, L.A., Mángano, M.G., Fregenal-Martínez, M.A. & de Gibert, J.M. 2000: Short-term colonization trace-fossil assemblages in a carbonate lacustrine Konservat-Lagerstätte (Las Hoyas fossil site, Lower Cretaceous, Cuenca, Central Spain). *Facies* 43 (1), 145–156.
- Buckland, P.C. & Dinnin, M.J. 1998: Insect faunas at Landnám: a palaeontological study at Tjørnuvík, Streymoy, Faroe Islands. *Fróðskaparrit* 46, 277–286.
- Buckland, P.C., Edwards, K.J. & Sadler, J.P. 1998a: Early Holocene investigations at Saksunardalur and the origins of the Faroese biota. *Fróðskaparrit* 46, 259–266.
- Buckland, P.C., Edwards, K.J., Sadler, J.P. & Dinnin, M.H. 1998b: Late Holocene insect faunas from Mykines, Faroe Islands, with observations on associated pollen and early settlement records. *Fróðskaparrit* 46, 287–296.
- Casten, U. 1973: The crust beneath the Faeroe Islands. *Nature Physical Science* 241, 83–84.
- Edwards, K.J. & Craigie, R. 1998: Palynological and vegetational changes associated with the deposition of Saksunarvatn Ash in the Faroe Islands. *Fróðskaparrit*, 46, 245–258.
- Edwards, K.J., Buckland, P.C., Craigie, R., Panagiotakopulu, E. & Stummann Hansen, S. 1998: Landscapes at Landnám: Palynological and Palaeontological Evidence from Tofanes, Faroe Islands. *Fróðskaparrit* 46, 229–244.
- Ekdale, A.A., Bromley, R.G., & Loope, D.B., 2007: Ichnofacies of an ancient erg: a climatically influenced trace fossil association in the Jurassic Navajo Sandstone, southern Utah, U.S.A.: In: Miller, W. (ed.): Trace Fossils: Concepts, Problems, Prospects. Elsevier, Amsterdam, 562–574.
- Ellis, D., Bell, B.R., Jolley, D.W. & O’Callaghan, M. 2002: The stratigraphy, environment of eruption and age of the Faroes Lava Group, NE Atlantic Ocean. In: Jolley, D.W. & Bell, B. R. (eds): The North Atlantic Igneous Province: Stratigraphy, Tectonic, Volcanic and Magmatic Processes. Geological Society of London, Special Publication 197, 253–269.
- Fillion, D. & Pickerill, R.K. 1990: Ichnology of the Upper Cambrian? to Lower Ordovician Bell Island and Wabana groups of eastern Newfoundland, Canada. *Palaeontographica Canadiana* 7, 1–119.
- Fortier, D., Kanevskiy, M. & Shur, Y. 2008: Genesis of Reticulate-Chaotic Cryostructure in Permafrost. In: Kane, D.L. & Hinkel, K.M. (eds): Proceedings of the Ninth International Conference on Permafrost, Fairbanks, Alaska. Institute of Northern Engineering 1, 451–456.
- Frey, R.W., Pemberton, S.G. & Fagerstrom, J.A. 1984: Morphological, ethological, and environmental significance of the ichnogenera *Scoyenia* and *Ancorichnus*. *Journal of Paleontology* 58, 511–528.
- Fu, S. & Werner, F. 1994: Distribution and Composition of Biogenic Structures on the Iceland-Faeroe Ridge: Relation to Different Environments. *Palaios* 9, 92–101.
- Gaigalas, A. & Uchman, A. 2004: Trace fossils from Upper Pleistocene varved clays S of Kaunas, Lithuania. *Geologija* 45, 16–26.
- Gariépy, C., Ludden, J. & Brooks, C. 1983: Isotopic and trace element constraints on the genesis of the Faroe lava pile. *Earth and Planetary Science Letters* 63, 257–272.
- Gathorne-Hardy, F.J., Lawson, I.T., Church, M.J., Brooks, S.J., Buckland, P.C. & Edwards, K.J. 2007: The Chironomidae of Gróthúsvatn, Sandoy, Faroe Islands: climatic and lake-phosphorus reconstructions, and the impact of human settlement. *The Holocene* 17, 1259–1264.



- Geoff Tanner, P.W. 2003: Desiccation structures (mud cracks, etc.). In: Middleton, G.V., Church, M.J., Coniglio, M., Hardie, L.A., & Longstaffe, F.J. (eds): *Encyclopedia of Sediments and Sedimentary Rocks*. Encyclopedia of Earth Sciences Series, Kluwer Academic Publishers, Dordrecht, Boston, London, 335–338.
- Grauert, M., Björck, S. & Bondevik, S. 2001: Storegga tsunami deposits in a coastal lake on Suðuroy, the Faroe Islands. *Boreas* 30, 263–271.
- Greve, C. 2001: En lito-, bio- og kronostratigrafisk undersøgelse af et interglacial lakustrint sediment ved Klaksvik, Borðoy, Nordlige Færøerne. Unpublished M.Sc. Thesis, University of Copenhagen.
- Hald, N. & Waagstein, R. 1984: Lithology and chemistry of a 2-km sequence of Lower Tertiary tholeiitic lavas drilled on Suduroy, Faeroe Islands (Lopra-1). In: Berthelsen, O., Noe-Nygaard, A. & Rasmussen, J. (eds): *The Deep Drilling Project 1980–1981 in the Faeroe Islands*. *Annales Societatis Scientiarum Færoensis* 1984, 15–38. Tórshavn.
- Hannon, G.E., Rundgren, M. & Jessen, C.A. 2010: Dynamic early Holocene vegetation development on the Faroe Islands inferred from high-resolution plant macrofossil and pollen data. *Quaternary Research* 73, 163–172.
- Hartz, N. 1903: Planteforsteninger fra Færøerne. *Meddelelser fra Dansk Geologisk Forening* 2 (9), 61–66.
- Holm, P.M., Hald, N. & Waagstein, R. 2001: Geochemical and Pb–Sr–Nd isotopic evidence for separate hot depleted and Iceland plume mantle sources for the Paleogene basalts of the Faroe Islands. *Chemical Geology* 178, 95–125.
- Jensen, S. 1997: Trace fossils from the Lower Cambrian Mickwitzia sandstone, south-central Sweden. *Fossils and Strata* 42, 1–110.
- Jessen, C.A., Rundgren, M., Björck, S., Andresen, C.S. & Conley, D.J. 2008: Variability and seasonality of North Atlantic climate during the early Holocene: evidence from Faroe Island lake sediments. *The Holocene* 18 (6), 851–860.
- Jóhansen, J. 1975: Pollen diagrams from the Shetland and Faroe Islands. *New Phytologist* 75 (2), 369–387.
- Jóhansen, J. 1985: Studies in the vegetational history of the Faroe and Shetland Islands. *Annales Societatis Scientiarum Færoensis* 1985, 117 p. Tórshavn.
- Jóhansen, J. 1989: Survey of geology, climate and vegetational history. In: Højgaard, A., Jóhansen, J. & Odum, S. (eds). *A century of tree-planting in the Faroe Islands*. *Annales Societatis Scientiarum Færoensis* 1989, 11–15. Tórshavn.
- Jolley, D.W. 2009: Palynofloral evidence for the onset and cessation of eruption of the Faroe Islands lava field. In: Varming, T. & Ziska, H. (eds): *Faroe Islands Exploration Conference: Proceedings of the 2<sup>nd</sup> Conference*. *Annales Societatis Scientiarum Færoensis* 2009, 156–173. Tórshavn.
- Jolley, D.W. & Bell, B.R. 2002: The evolution of the North Atlantic Igneous Province and the opening of the NE Atlantic rift. In: Jolley, D.W. & Bell, B.R. (eds): *The North Atlantic Igneous Province: Stratigraphy, Tectonic, Volcanic and Magmatic Processes*. Geological Society of London, Special Publication 197, 1–13.
- Juul, M. 1992: The Holocene Development in Skálafjord, Faroe Islands, based on Foraminiferal Analysis and Shallow Seismic Profiles (in Danish). M.Sc. Thesis, University of Aarhus, 92 pp.
- Keighley, D.G. & Pickerill, R.K. 1995: The ichnotaxa *Palaeophycus* and *Planolites*: Historical perspectives and recommendations. *Ichnos* 3 (4), 301–309.
- Kim, J.Y., Pickerill, R.K. & Wilson, R.A. 2001: *Palaeophycus bolbitermilus* isp. nov. from the Lower Silurian Upsalquitch Formation of New Brunswick, eastern Canada. *Atlantic Geology* 36 (2–3), 131–137.
- Kim, J.Y., Kim, K.-S. & Pickerill, R.K. 2002: Cretaceous Nonmarine Trace Fossils from the Hasandong and Jinju Formations of the Namhae Area, Kyongsangnamdo, Southeast Korea. *Ichnos* 9, 41–60.
- Krapovickas, V. 2012: Ichnology of distal overbank deposits of the Santa Cruz Formation (late Early Miocene): paleohydrologic and paleoclimatic significance. In: Vizcaíno, S.F., Kay, R.F. & Bargo, M.S. (eds): *Early Miocene Paleobiology in Patagonia. High-Latitude Paleocommunities of the Santa Cruz Formation*. Cambridge, New York: Cambridge University Press, 91–103.
- Krapovickas, V., Mancuso, A.C., Arcucci, A. & Caselli, A. 2010: Fluvial and eolian ichnofaunas from the Lower Permian of South America (Patquía Formation, Paganzo Basin). *Geologica Acta* 8 (4), 449–462.
- Laufeld, S. 1965: Sporomorphs in Tertiary coal from the Faeroe Islands. *Geologiska Föreningen i Stockholms Förhandlingar* 87 (2), 231–238.
- Lund, J. 1981: Eine ober-paläozäne Mikroflora von den Färöern, Dänemark. *Courier Forschungsinstitut Senckenberg* 50, 41–45.
- Lund, J. 1983: Biostratigraphy of interbasaltic coals from the Faeroe Islands. In: Bott, M.H.P., Saxov, S., Talwani, M. & Thiede, J. (eds): *Structure and Development of the Greenland-Scotland Ridge. New Methods and Concepts*. Plenum Press, New York, 417–423.
- Lund, J. 1989: A late Paleocene non-marine microflora from the interbasaltic coals of the Faeroe Islands, North Atlantic. *Bulletin of the Geological Society of Denmark* 37, 181–203.
- Masson, D.G., Plets, R.M.K., Huvenne, V.A.I., Wynn, R.B. & Bett, B.J. 2010: Sedimentology and depositional history of Holocene sandy contourites on the lower slope of the Faroe–Shetland Channel, northwest of the UK. *Marine Geology* 268, 85–96.
- Melchor, R.N. 2004: Trace fossil distribution in lacustrine deltas: examples from the Triassic rift lakes of the Ischigualasto-Villa Unión basin, Argentina. In: McIlroy, D. (ed): *The Application of Ichnology to Palaeoenvironmental and Stratigraphic Analysis*. Geological Society of London, Special Publication 228, 335–354.
- Melchor, R.N., Bedatou, E., de Valais, S. & Genise, J.F. 2006: Lithofacies distribution of invertebrate and vertebrate trace-fossil assemblages in an Early Mesozoic ephemeral fluvio-lacustrine system from Argentina: Implications for the Scoyenia ichnofacies. *Palaeogeography, Palaeoclimatology, Palaeoecology* 239, 253–285.

- Melchor, R.N., Genise, J.F., Buatois, L.A. & Umazano, A.M. 2012: Chapter 12 – Fluvial Environments. In: Knaust, D. & Bromley, R. (eds): Trace Fossils as Indicators of Sedimentary Environments. *Developments in Sedimentology* 64, 327–378.
- Nielsen, K.S. & Nielsen, J.K. 2001: Bioerosion in Pliocene to late Holocene tests of benthic and planktonic foraminiferans, with a revision of the ichnogenera *Oichnus* and *Tremichnus*. *Ichnos* 8, 99–116.
- Noe-Nygaard, A. 1940: Planteførende Tuffer paa Færøerne. *Meddelelser fra Dansk Geologisk Forening* 9 (5), 548–549.
- Noe-Nygaard, A. & Rasmussen, J. 1968: Petrology of a 3,000 metre sequence of basaltic lavas in the Faeroe Islands. *Lithos* 1, 3, 286–304.
- Olsen, J., Björck, S., Leng, M.J., Gudmundsdóttir, E.R., Odgaard, B.V., Lutz, C.M., Kendrick, C.P., Andersen, T.J. & Seidenkrantz, M.-S. 2010: Lacustrine evidence of Holocene environmental change from three Faroese lakes: a multiproxy XRF and stable isotope study. *Quaternary Science Reviews* 29, 2764–2780.
- Parra, M., Delmont, P., Dumon, J.C., Ferragne, A. & Pons, J.C. 1987: Mineralogy and origin of Tertiary interbasaltic clays from the Faeroe Islands, northeastern Atlantic. *Clay Minerals* 22, 63–82.
- Passey, S.R. 2004: The Volcanic and Sedimentary Evolution of the Faeroe Plateau Lava Group, Faeroe Islands and the Faeroe–Shetland Basin, NE Atlantic. Ph.D. Thesis, University of Glasgow, 450 pp.
- Passey, S.R. 2008: The Volcanic and Sedimentary Evolution of the Faeroe Islands Basalt Group. 33 IGC Excursion No. 6, August 15–22, 2008, 113 pp.
- Passey, S.R. 2009: Recognition of a faulted basalt lava flow sequence through the correlation of stratigraphic marker units, Skopunarfjørður, Faeroe Islands. In: Varming, T. & Ziska, H. (eds): Faeroe Islands Exploration Conference: Proceedings of the 2<sup>nd</sup> Conference. *Annales Societatis Scientiarum Færoensis* 2009, 170–204.
- Passey, S.R. 2014: The habit and origin of siderite spherules in the Eocene coal-bearing Prestfjall Formation, Faeroe Islands. *International Journal of Coal Geology* 122, 76–90.
- Passey, S.R. & Bell, B.R. 2007: Morphologies and emplacement mechanisms of the lava flows of the Faeroe Islands Basalt Group, Faeroe Islands, NE Atlantic Ocean. *Bulletin of Volcanology* 70, 139–156.
- Passey, S.R. & Jolley, D.G. 2009: A revised lithostratigraphic nomenclature for the Palaeogene Faeroe Islands Basalt Group, NE Atlantic Ocean. *Earth and Environmental Science Transactions of the Royal Society of Edinburgh* 99, 127–158.
- Passey, S.R. & Varming, T. 2010: Surface interpolation within a continental flood basalt province: An example from the Palaeogene Faeroe Islands Basalt Group. *Journal of Structural Geology* 32, 709–723.
- Pemberton, S.G. & Frey, R.W. 1982: Trace fossil nomenclature and the *Planolites-Palaeophycus* dilemma. *Journal of Paleontology* 56 (4), 843–881.
- Persson, C. 1968: Försök till tefrokronologisk datering i fyra färöiska Myrar. *Geologiska Föreningen i Stockholms Förhandlingar* 90 (2), 241–266.
- Post, K. & Jensen, J.-K. 2013: On diamonds, a mammal fossil from the Faeroe Islands, and the northernmost occurrence of fossil beaked whales. *Cranium*, November 2013, 19–21.
- Rasmussen, J.E. 1972: Mórena á Borðoyarvík, sum bendir á eitt millumbil í glersetingini har norðuri. *Fróðskaparrit* 20, 54–70.
- Rasmussen, J. & Koch, B.E. 1963: Fossil *Metasequoia* from Mikines, Faeroe Islands. *Fróðskaparrit* 12, 83–96.
- Rasmussen, J. & Noe-Nygaard, A. 1969: Beskrivelse til Geologisk Kort over Færøerne i Målestok 1:50 000. *Danmarks Geologiske Undersøgelse Række I (Geological Survey of Denmark Series I)* no. 24, 370 pp, with six maps.
- Rasmussen, J. & Noe-Nygaard, A. 1970: Geology of the Faeroe Islands (pre-Quaternary). *Danmarks Geologiske Undersøgelse Række I (Geological Survey of Denmark Series I)* no. 25, 142 pp, with one map.
- Rasmussen, J. & Noe-Nygaard, A. 1990: Upphav Føroya i ordum, myndum og á korti. Færøernes oprindelse i ord, billeder og på kort. The origin of the Faeroe Islands in text, pictures and on maps. 64 pp, six maps. *Danmarks Geologiske Undersøgelse. Særdokumenter (Geological Survey of Denmark. Special Issues)*. Copenhagen: Geological Survey of Denmark.
- Rasmussen, R. 1925: Um skógir í Føroyum í forðum. *Varðin* 5, 153–163, Tórshavn.
- Roncaglia, L. 2004: Palynofacies analysis and organic walled dinoflagellate cysts as indicators of paleo-hydrographic changes: an example from Holocene sediments in Skalaifjord, Faeroe Islands. *Marine Micropaleontology* 50, 21–42.
- Sadhukhan, S., Majumder, S.R., Mal, D., Dutta, T. & Tarafdar, S. 2007: Desiccation cracks on different substrates: simulation by a spring network model. *Journal of Physics: Condensed Matter* 19, 35, 1–10.
- Schlirf, M., Uchman, A. & Kümmel, M. 2001: Upper Triassic (Keuper) non-marine trace fossils from the Haßberge area (Franconia, south-eastern Germany). *Paläontologische Zeitschrift* 75 (1), 71–96.
- Storey, M., Duncan, R.A. & Tegner, C. 2007: Timing and duration of volcanism in the North Atlantic Igneous Province: implications for geodynamics and links to the Iceland hot-spot. *Chemical Geology* 241, 264–281.
- Uchman, A., Pika-Biolzi, M. & Hochuli, P.A. 2004: Oligocene trace fossils from temporary fluvial plain ponds: an example from the Freshwater Molasse of Switzerland. *Eclogae Geologicae Helveticae* 97, 133–148.
- Uchman, A., Hanken, N.-M. & Binns, R. 2005: Ordovician bathyal trace fossils from metasiliciclastics in Central Norway and their sedimentological and paleogeographical implications. *Ichnos* 12, 205–133.
- Uchman, A., Gaigalas, A. & Kazakauskas, V. 2008: Trace fossils from the Upper Pleistocene glaciolacustrine laminated sediments of Lithuania. *Geologija* 50 (3), 212–226.



- Uchman, A., Kazakauskas, V. & Gaigalas, A. 2009: Trace fossils from Late Pleistocene varved lacustrine sediments in eastern Lithuania. *Palaeogeography, Palaeoclimatology, Palaeoecology* 272, 199–211.
- Udden, J.A. 1918. Fossil ice crystals: an instance of the practical value of “pure science”. *University of Texas Bulletin* 1821, 3–8.
- Vandenbergh, N., Hilgen, F.J., Speijer, R.P., Ogg, J.G., Gradstein, F.M., Hammer, O., Hollis, C.J. & Hooker, J.J. 2012: Chapter 28 – The Paleogene Period. In: Gradstein, F.M., Ogg, J.G., Schmitz, M. & Ogg, G. (eds): *The Geologic Time Scale 2012*. Elsevier, Amsterdam, 855–921.
- Voigt, S. 2005: Die Tetrapodenichnofauna des kontinentalen Oberkarbon und Perm im Thüringer Wald – Ichnotaxonomie, Paläoökologie und Biostratigraphie. Cuvillier Verlag, Göttingen, 179 pp.
- Waagstein, R. 2006: Composite log from the Lopra-1/1A well, Faroe Islands. In: Chalmers, J.A. & Waagstein, R. (eds.): *Scientific results from the deepened Lopra-1 borehole, Faroe Islands*. Geological Survey of Denmark and Greenland Bulletin 9, folded insert.
- Waagstein, R. & Hald, N. 1984: Structure and petrography of a 660 m lava sequence from the Vestmanna-1 drillhole, lower and middle basalt series. In: Berthelsen, O., Noe-Nygaard, A. & Rasmussen, J. (eds): *The Deep Drilling Project 1980–1981 in the Faeroe Islands*. *Annales Societatis Scientiarum Færoensis* 1984, 39–71.
- Waagstein, R., Guise, P. & Rex, D. 2002: K/Ar and  $^{39}\text{Ar}/^{40}\text{Ar}$  whole-rock dating of zeolite facies metamorphosed flood basalts: the upper Paleocene basalts of the Faroe Islands, NE Atlantic. In: Jolley, D.W. & Bell, B.R. (eds): *The North Atlantic Igneous Province: Stratigraphy, Tectonic, Volcanic and Magmatic Processes*. Geological Society of London, Special Publication 197, 219–252.
- Wang, M., Qi, Y., Li, D., Dai, M. & Chang, Y. 2014: Ichnofabrics and their environmental interpretation from the fluvial deposits of the Middle Triassic Youfangzhuang Formation in Western Henan, Central China. *Journal of Earth Science* 25 (4), 648–661.
- Wastegård, S., Björck, S., Greve, C. & Rasmussen, T.L. 2005: A tephra-based correlation between the Faroe Islands and the Norwegian Sea raises questions about chronological relationships during the last interglacial. *Terra Nova* 17 (1), 7–12.
- Wetzel, A., Uchman, A. & Bromley, R.G.: Underground miners come out to the surface – trails of earthworms. *Ichnos*, in press.
- Witak, M., Wachnicka, A., Kuijpers, A., Troelstra, S., Prins, M.A. & Witkowski, A. 2005: Holocene North Atlantic surface circulation and climate variability: evidence from diatom records. *The Holocene* 15 (1), 85–96.

