

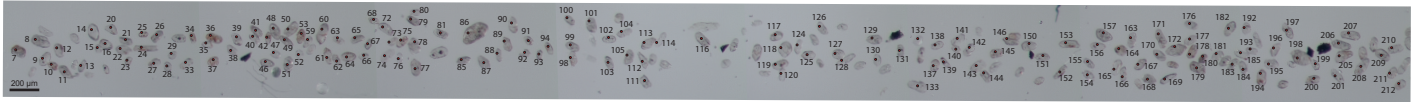
Supplementary data file 4 to:

Olivarius, M., Friis, H., Kokfelt, T.F. & Wilson, J.R. 2015: Proterozoic basement and Palaeozoic sediments in the Ringkøbing–Fyn High characterized by zircon U–Pb ages and heavy minerals from Danish onshore wells. *Bulletin of the Geological Society of Denmark* 63, 29–43.

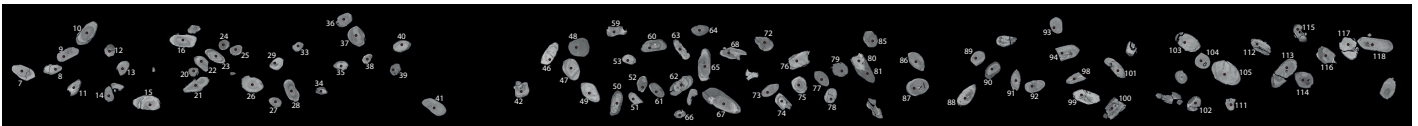
U–Pb shot point locations in zircon grains

The numbers refer to the individual analyses listed in Supplementary data file 3

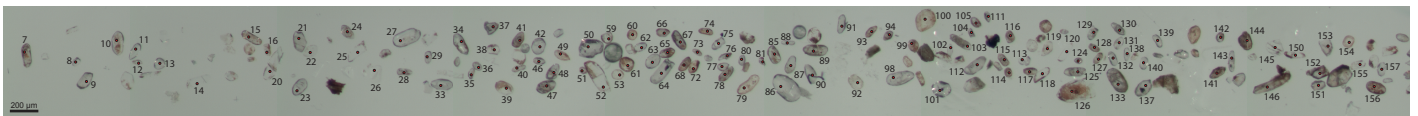
Grindsted-1, 1622.30 m



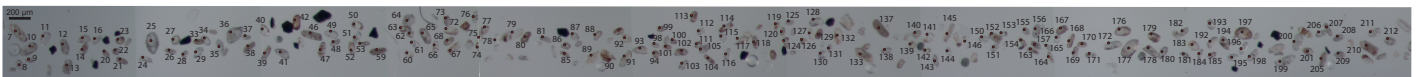
Glamsbjerg-1, 910.58 m



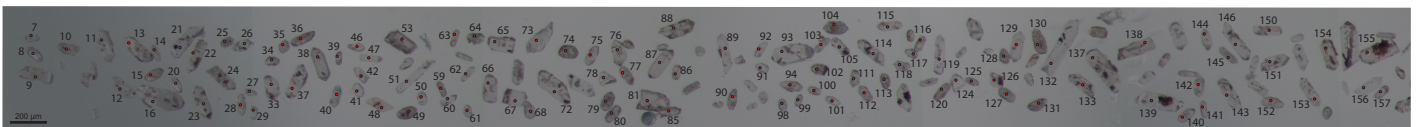
Arnum-1, 1842.60 m



Arnum-1, 1842.90 m



Ringe-1, 1436.32 m



Slagelse-1, 2973.03 m

